

# MAXXMAR™

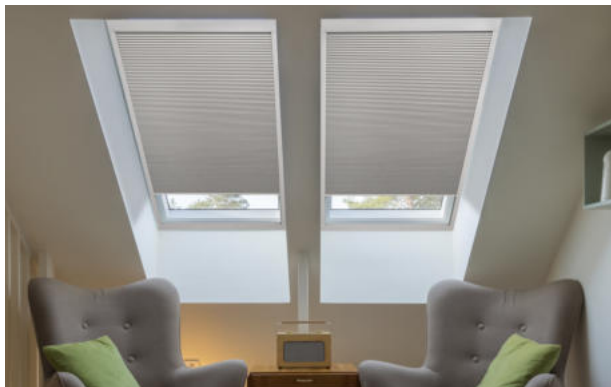
WINDOW FASHIONS



[www.maxxmar.com](http://www.maxxmar.com)

# Maxxmar New Quality Products

Cellular Shades - Framed Skylight Room Darkening System (for details see pages 33-35)



Outdoor/Exterior - Roller Shades - MaxxZip System (for details see pages 36-41)



Dream Shade (for details see pages 42-45)



# Innovative Opera Shades



Opera Roller Shade



Perfect (Opera) Sunset Shade



Opera Dual Shade

# Roller Shades



Roller Shade - Square Cassette



Roller Shade - Grande-M Cassette

## SLEEK MODERN COMPACT DESIGN

Roller shades are designed for a minimalist look that maximizes window space and complements any interior décor styles.

## SUPERIOR FEATURES

- Greater Home Energy Efficiency and Enhanced Light Control
- Cordless, Motorization & Smart Home Compatibility
- Wide Variety of Colours, Fabrics, Textures & Patterns
- Available as an Opera or Double Shade
- Framed Specialty Shape applications available
- Provides UV Protection for Furnishings and Floors
- Low Maintenance and Durable
- Child & Pet Safe

# Roller Shades with Framed Blackout System



Roller Shade with Framed Blackout System



Roller Shade with Framed Blackout System

## ROLLER SHADES WITH FRAMED BLACKOUT SYSTEM

The Framed Blackout System features a shade that fits neatly into a stylish frame and that moves smoothly up and down within the frame while reducing light gaps when fully closed.

## SUPERIOR FEATURES

Roller Shades with Framed Blackout System offer the same great features as our standard roller shades with the addition of:

- Reduced Light Gaps for Greater Privacy

## Roller Specialty Shape Shades



Roller Specialty Shape Shade



Roller Specialty Shape Shades

### ROLLER SHADES ADAPT BEAUTIFULLY TO SPECIALTY SHAPES

Arches, circles and other specialty shaped windows add drama and scale to any room. This aesthetic becomes even more prominent with the addition of modern yet elegant Framed Specialty Shape Roller Shades.

#### SUPERIOR FEATURES

- Customized to Fit most Circles, Arches and other Special Shape Windows
- Available only with Framed Fixed Shade (non-operable)
- Wide Variety of Colours, Fabrics, Textures & Patterns
- Provides UV Protection for Furnishings and Floors
- Low Maintenance and Durable
- Child & Pet Safe

## BetterFIT™ Roller Shades



BetterFIT™ Roller Shades



BetterFIT™ Roller Shades

### REDUCED LIGHT GAPS FOR GREATER PRIVACY

The unique design offered by BetterFIT™ features a shade that fits neatly into a stylish frame which, in turn, moves together with tilt and turn windows and doors.

#### SUPERIOR FEATURES

BetterFIT™ Roller Shades offer the same great features as our standard roller shades with the addition of:

- Reduced Light Gaps for Greater Privacy
- Quick & Easy Installation for Both Windows & Doors
- Excellent Choice for Tilt & Turn Windows & Doors

## Dual Shades & Specialty Shapes



Opera Dual Shades



Dual Specialty Shades with Operable Option

### STYLISH AND MODERN

Featuring an alternating sheer and solid fabric, dual shades add a sleek, contemporary touch to any room elevating the overall décor and ambiance. Dual shades will accommodate specialty shape windows to further the beauty and drama that these windows bring to your décor.

### SUPERIOR FEATURES

- Exceptional Home Energy Efficiency with Versatile Light Control
- Cordless, Motorization & Smart Home Compatibility
- Wide Variety of Colours, Fabrics, Textures & Patterns
- Available as an Opera or Double Shade
- Framed Specialty Shades available as Fixed or Operable
- Low Maintenance and Durable
- Child & Pet Safe

## BetterFIT™ Dual Shades



BetterFIT™ Dual Shade



BetterFIT™ Dual Shades

### REDUCED LIGHT GAPS FOR GREATER PRIVACY

The unique design offered by BetterFIT™ features a shade that fits neatly into a stylish frame which, in turn, moves together with tilt and turn windows and doors.

### SUPERIOR FEATURES

BetterFIT™ Dual Shades offer the same great features as our standard Dual Shades with the addition of:

- Reduced Light Gaps for Greater Privacy
- Exceptional Home Energy Efficiency
- Excellent Choice for Tilt & Turn Windows & Doors

## Sunset Shades



Perfect (Opera) Sunset Shades



Sunset Shade

### TIMELESS SOPHISTICATION

Sunset Shades feature soft, horizontal vanes suspended between two layers of sheer fabric offering a unique blend of light control, privacy and serenity.

#### SUPERIOR FEATURES

- Exceptional Home Energy Efficiency with Versatile Light Control
- Motorization & Smart Home Compatibility
- Wide Variety of Colours, Fabrics, Textures & Patterns
- Available as an Opera or Double Shade
- Low Maintenance and Durable
- Child & Pet Safe

## Sunset Specialty Shape Shades



Sunset Specialty Shape Shade



Sunset Specialty Shape Shades

### SOFT INVITING AMBIANCE

Sunset Shades feature a sheer fabric that softly diffuses natural light creating a warm and inviting atmosphere while reducing glare. When applied to specialty shaped windows, Sunset Specialty Shades transform the room from simply dramatic to extraordinary.

#### SUPERIOR FEATURES

Sunset Specialty Shades offer the same great features as our standard Sunset Shades with the addition of:

- Custom Fit Most for Circles, Arches and other Special Shape Windows
- Framed Specialty Shades available as Fixed or Operable

## Roman Shades - Flat



### CLASSIC AND ELEGANT

Roman shades add a touch of elegance and style to any room making them a versatile choice for both modern or traditional décors. The fabric folds create a soft and tailored look, adding texture and depth to your windows. Available in the more contemporary Flat or Hobbled.

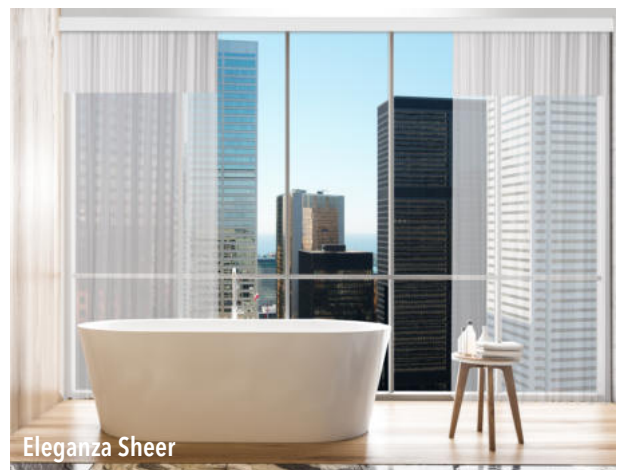
### SUPERIOR FEATURES

- Exceptional Home Energy Efficiency
- Light Filtering Fabric Options
- Motorization & Smart Home Compatibility
- Wide Variety of Colours, Fabrics, Textures & Patterns
- Low Maintenance and Durable
- Child & Pet Safe

## Roman Shades - Hobbled



# Eleganza Sheer



## MAGICAL COMBINATION OF SHEERS WITH VERTICAL BLINDS

By combining the elegance of sheer fabric with the functionality of vertical blinds, the Eleganza Sheer offers a soft sophisticated appearance to large windows and sliding glass doors. The sheer fabric gently diffuses sunlight creating a soft, diffused light that brightens the room without harsh glare. The vertical vanes offer you greater light and privacy control.

## SUPERIOR FEATURES

- Soft Light Diffusion with Greater Light Control and Privacy
- Greater Home Energy Efficiency
- Wide Variety of Colours, Fabrics and Textures
- Wand Control for Family Safety and Seamless Operation
- Child & Pet Safe



## 2" Wood Horizontal Blinds



2" Wood Horizontal Blind

## 2" Faux Wood Horizontal Blinds



2" Faux Wood Horizontal Blinds



2" Wood Horizontal Blind



2" Faux Wood Horizontal Blind

### AFFORDABLE AND TIMELESS

2" Wood and Faux Wood Horizontal Blinds are affordable, classic and timeless and will complement a variety of interior styles from traditional to contemporary.

### SUPERIOR FEATURES

- Enhanced Home Energy Efficiency
- Greater Privacy & Light Control
- Cordless, Motorization & Smart Home Compatibility
- Variety of Finishes including Natural Wood Stains for the Wood blinds
- Wide range of colours to match any décor style for Faux Wood Blinds
- Low Maintenance and Durable
- Child & Pet Safe



2" Faux Wood Horizontal Blind

# Panel Track



Panel Track



Panel Track

## MODERN, SLEEK AND MULTIFUNCTIONAL

Panel Tracks are designed to glide smoothly along a track providing a modern clean look that is an ideal solution for large windows, sliding glass doors, patio doors and even room dividers.

### SUPERIOR FEATURES

- Smooth Gliding Mechanism for Ease of Use
- Greater Home Energy Efficiency & Enhanced Light Control
- Wide Variety of Colours, Fabrics, Textures & Patterns
- Provides UV Protection for Furnishings and Floors
- Wand Control for Family Safety
- Low Maintenance and Durable
- Child & Pet Safe

# PVC Verticals



PVC Verticals



PVC Verticals

## CLASSIC, AFFORDABLE AND PRACTICAL

PVC Vertical Blinds are an economical window treatment choice that feature slats in various widths and offers great coverage and value for large windows and sliding glass doors without sacrificing style.

### SUPERIOR FEATURES

- Affordable, Practical and Ideal for High Humidity Areas
- Greater Home Energy Efficiency & Enhanced Light Control
- Wide Variety of Colours, Fabrics, Textures & Patterns
- Provides UV Protection for Furnishings and Floors
- Wand Control for Family Safety
- Low Maintenance and Durable
- Child & Pet Safe

# Innovative Shutters



Talento™ Shutters  
(vinyl with standard Tilt-Bar System)

# Shutters are offered in Vinyl and Wood with Tilt-Bar Controls & Optional Gear System



Somerset™ Shutters  
(vinyl with optional Gear System)



Tilia™ Wood Shutters  
(with standard Tilt-Bar System)



Supreme Performance Specialty Shapes

# Talento™, Summerview™ & Somerset™ Vinyl Shutters



Talento™ Shutters  
(vinyl with standard Tilt-Bar System)



Somerset™ Shutters - Bypass  
(vinyl with optional Gear System)

## SUPERIOR CRAFTSMANSHIP WITH VERSATILE DESIGN OPTIONS

Maxxmar's vinyl Shutters can be custom-sized to fit most window, door and specialty shape applications providing superior functionality and enhanced aesthetics for any room. Being moisture resistant, these shutters are an excellent choice for high humidity rooms such as kitchens and bathrooms.

These shutters are crafted for unmatched durability and security with premium features that include a 3-leaf hinge that keeps the shutter securely in place. Maxxmar's vinyl Shutters are backed by a **25 Year Limited Warranty.**

# Great for Windows & Doors



Summerview™ Shutters - French Doors  
(vinyl with standard Tilt-Bar System)



Somerset™ Shutters - Bi-fold  
(vinyl with optional Gear System)

## SUPERIOR FEATURES

- Enhanced Home Energy Efficiency for your home
- Precise Light & Privacy Control
- Available in 2 1/2", 3 1/2" and 4 1/2" Louver Sizes
- Variety of Colours & Finishes
- Classic Tilt-Bar or Hidden (Rear-Mini) Tilt System
- Optional Gear System available
- Provides UV Protection for Furnishings and Floors
- Low Maintenance & Durable
- Child & Pet Safe

# Tilia™ Wood Shutters



## TIMELESS ELEGANCE OF NATURAL WOOD

Enhance the overall aesthetic and look of your home with the natural beauty and rich texture of wood shutters. Tilia™ and Cashmere™ wood shutters are an excellent choice for most door, window and specialty shape applications. These beautifully crafted shutters will add a timeless and elegant touch to any room.

Meticulously crafted for unmatched durability and security, Tilia™ and Cashmere™ wood shutters feature a 3-leaf hinge that keeps the shutter securely in place. Tilia™ and Cashmere™ wood shutters are backed by a **25 Year Limited Warranty**.

# Cashmere™ Hardwood Shutters



## SUPERIOR FEATURES

- Enhanced Energy Efficiency for your home
- Precise Light & Privacy Control
- Available in 2 1/2", 3 1/2" and 4 1/2" Louver Sizes
- Variety of Colours & Finishes
- Classic Tilt-Bar or Hidden (Rear-Mini) Tilt System
- Provides UV Protection for Furnishings and Floors
- Eco-Friendly, Low Maintenance and Durable
- Child & Pet Safe

# Shutter Specialty Shapes



## SUPREME PERFORMANCE SPECIALTY SHAPES (PATENTED)

Combi Specialty Shapes and Arches shown above and to the right feature extra-large shutters (over 10 ft in height) with fully operable panels and rotating louvers. These louvers are expertly crafted to follow the contour of the window opening giving the shutter a seamlessly integrating look.

A truly innovative shutter product by Maxxmar Window Fashions™ who are the industry's Leaders in Quality and Innovation.

## SUPERIOR FEATURES

Supreme Performance Specialty Shapes offer the same superior features as our vinyl and wood shutters with the addition of:

- Fully Operable Panels & Rotating Louvers.
- Curved Louvers that precisely follow the contours of the window opening.



Supreme Performance Specialty Shapes



Supreme Performance Specialty Shapes

# Shutter Specialty Shapes



Supreme Performance Specialty Shapes

# Quality and Innovation



**The Maxxmar™  
Art Gallery of Ontario  
Project**

**World-renowned  
Frank Gehry Team  
chooses Maxxmar™  
to provide Custom Designed  
& Innovative Shutters for the  
Art Gallery of Ontario Project.**

# Cellular Shades



Cordless Cellular Shades



Cordless Cellular Shades

## HONEYCOMB CONSTRUCTION: BEAUTY & FUNCTIONALITY

Cellular shades' unique honeycomb design elegantly complements any room décor and increases your home's overall energy efficiency.

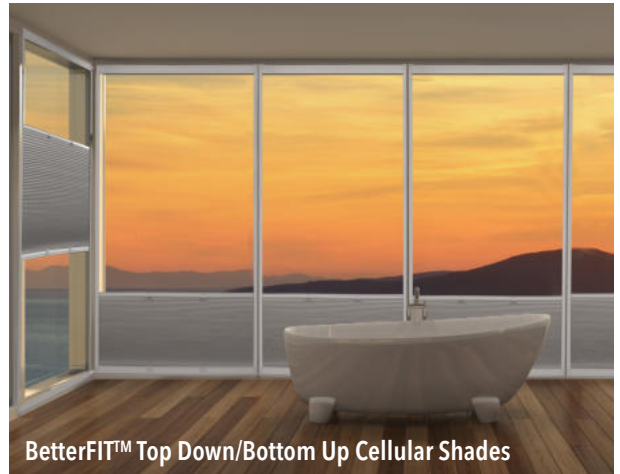
### SUPERIOR FEATURES

- Greater Home Energy Efficiency and Enhanced Light Control
- Cordless, Motorization & Smart Home Compatibility
- Wide Variety of Colours, Fabrics, Textures & Patterns
- Available as Cordless or with Day/Night feature
- Framed Skylight & Framed Specialty Shape applications available
- Provides UV Protection for Furnishings and Floors
- Low Maintenance and Durable
- Child & Pet Safe

# BetterFIT™ Cellular Shades



BetterFIT™ Day/Night Cellular Shades



BetterFIT™ Top Down/Bottom Up Cellular Shades

## BETTERFIT™ CELLULAR SHADES

The unique design offered by BetterFIT™ features a shade that fits neatly into a stylish frame which, in turn, moves together with tilt and turn windows and doors.

### SUPERIOR FEATURES

BetterFIT™ Cellular Shades offer the same great features as our standard cellular shades with the addition of:

- Reduced Light Gaps for Greater Privacy
- Quick & Easy Installation for Both Windows & Doors
- Available as Cordless, Day/Night or Top Down/Bottom Up
- Excellent Choice for Tilt & Turn Windows & Doors

# Cellular Specialty Shades



Cellular Specialty Shape Shade



Cellular Specialty Shape Shades

## CELLULAR SHADES: EASILY ADAPTABLE TO SPECIALTY SHAPES

Cellular shades are easily adaptable to specialty shaped windows and will enhance the natural beauty of these windows. Their unique honeycomb design elegantly complements any room décor.

### SUPERIOR FEATURES

Cellular Framed Specialty Shades offer the same great features as our standard cellular shades with the addition of:

- Reduced Light Gaps for Greater Privacy
- Available only as a Fixed Shade (non-operable)
- Arches offered in either Horizontal or Fan orientation

# Cellular Shades - Framed Skylight & Room Darkening System

(operated by manual or motorization)



Cellular Shades - Framed Skylight & Room Darkening System

## CELLULAR SHADES - FRAMED SKYLIGHT & ROOM DARKENING SYSTEM

These skylight shades are uniquely designed so that the shade can be operated on a slope in any orientation either manually or motorized. This versatility makes these shades an excellent choice not only for skylights, but also for other applications, including regular windows that require additional light-control.

### SUPERIOR FEATURES

- Innovative Orientation Flexibility - engineered to work in any orientation: sideways, angled, tilted, sloped, or flat skylights. No restrictions.
- Superior Energy Efficiency - honeycomb cellular design provides advanced insulation and energy savings.
- Best Panoramic View - designed to cover large skylights and angled windows while maintaining a wide, unobstructed view.
- Room Darkening Capability - fully enclosed 4-sided frame reduces light gaps, ensuring privacy and comfort.
- Manual & Motorized Options - available with either remote-controlled motorization or manual operation.
- Durable & Safe - long-lasting, low maintenance, and child- and pet safe.
- Customizable Style - offered in Mirage frame colours with a wide selection of fabric colours and textures.
- Value Advantage - a skylight innovation unlike any other, offered at the most accessible and aggressive price point.



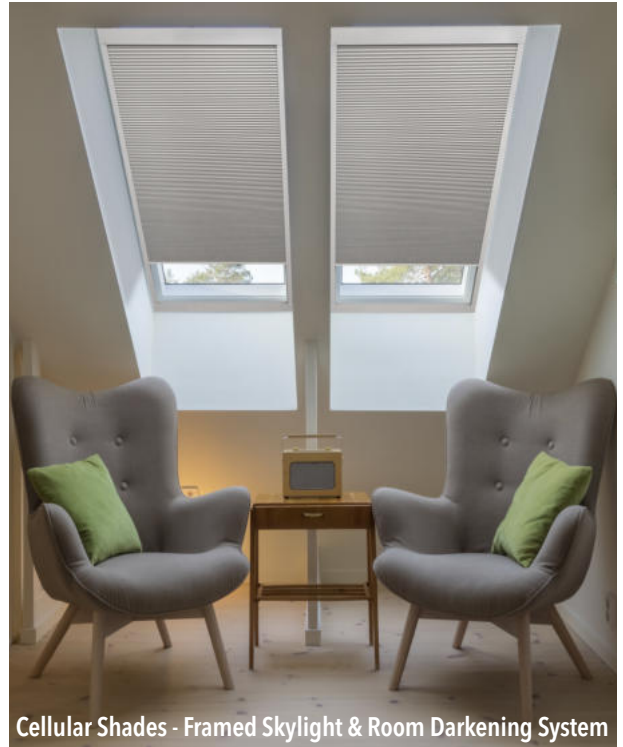
# Cellular Shades - Framed Skylight & Room Darkening System

(operated by manual or motorization)

New  
Maxxmar  
Quality  
Product



Cellular Shades - Framed Skylight & Room Darkening System



Cellular Shades - Framed Skylight & Room Darkening System



Cellular Shades - Framed Skylight & Room Darkening System



Cellular Shades - Framed Skylight & Room Darkening System

# Outdoor/Exterior - Roller Shades - MaxxZip System

(operated by manual or motorization)



Outdoor/Exterior - Roller Shades - MaxxZip System

New  
Maxxmar  
Quality  
Product



Outdoor/Exterior - Roller Shades - MaxxZip System

## STREAMLINED MODERN OUTDOOR DESIGN

These premium roller shades are built for a clean, contemporary appearance that enhances patios, decks and balconies.

## SUPERIOR FEATURES

- Heavy-Duty Build - engineered with reinforced, industrial-strength, outdoor-grade components built to thrive in the harshest conditions.
- Components are performance-rated for operation between -15°C and -30°C, depending on configuration.
- Storm-Resistant: wind-tough rollers and reinforced brackets.
- Weather-Tough: moisture-proof, UV-stabilized, fade-resistant, and corrosion-resistant.
- Performance-Driven: crafted for continuous outdoor use, with maximum strength, resilience, and longevity.
- Manual & Motorized Options - available with either remote-controlled motorization or manual operation.
- Streamlined Outdoor Design - sleek, modern styling enhances patios, decks, gazebos, and balconies.
- Varying Opacity Options - fabrics available from 1% to 40% openness for tailored light control and privacy.
- Sun & UV Protection - reduces glare while protecting furnishings and interiors.
- Bug Reduction - acts as a barrier to keep insects out when lowered.
- Smart Home Ready - motorized options integrate with home automation.
- Cordless & Safe - no tangles, safe for children and pets.
- Custom Fit - tailored for large outdoor openings, pergolas, and unique exterior spaces.
- Elevates Outdoor Living - transforms patios into premium entertainment areas.
- Value Advantage - a heavy-duty, innovation-driven solution offered at the most accessible and aggressive price point.



# Outdoor/Exterior - Roller Shades - MaxxZip System (operated by manual or motorization)

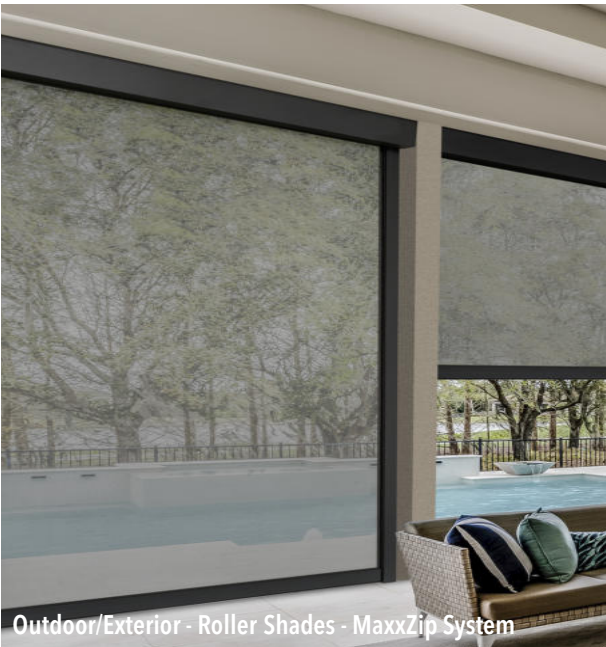
New  
Maxxmar  
Quality  
Product



Outdoor/Exterior - Roller Shades - MaxxZip System



Outdoor/Exterior - Roller Shades - MaxxZip System



Outdoor/Exterior - Roller Shades - MaxxZip System



Outdoor/Exterior - Roller Shades - MaxxZip System

# Outdoor/Exterior - Roller Shades - MaxxZip System

(operated by manual or motorization)

- Built to withstand the elements
- Durable & long-lasting
- Child & pet safe



Maxxmar Dealer Sample Kit for Outdoor/Exterior - Roller Shades - MaxxZip System

Manufactured with only premium quality components



Cassette

Cassette Cover

Remote Control



Cassette End Caps

Clutch



Side Channels



Tube Tail End Plugs

Motor Crowns



Bottom Rail Motorized

Bottom Rail Hand Push



Tube Tail End Balancer

Motor Drive Adapter

Somfy Motor Drive Adapter

Motor End Balancers



Zipper Guides



Limiter End for Hand Push

Maxxmar Dealer Sample Kit for Outdoor/Exterior - Roller Shades - MaxxZip System

# Dream Shade

(operated by manual or motorization)



## VERSATILE CLASSIC SHEER WITH MOTORIZATION OPTION

The Dream Shade combines a sheer shade with a vertical blind. The sheer fabric gently diffuses sunlight creating a diffused light that brightens the room without harsh glare, while the vertical vanes offer you greater light and privacy control.

Its unique design features individual sheer wrapped vanes that stay separated from one another. This versatile feature allows you to pull them apart and walk straight through. The Dream Shade is also available with motorization.

## SUPERIOR FEATURES

- Walk-Through Fabric Vanes - innovative design with individual fabric vanes that gently separate, letting you walk through effortlessly.
- Unique Advantage: Unlike other similar products that require full replacement if the fabric is damaged, this shade allows for individual vane replacement. A single damaged vane can be swapped out easily - saving time, cost, and hassle.
- Upscale Look - sheer fabric elegance with vertical blind practicality for a premium finish.
- Soft Light Diffusion - filters sunlight into a warm, natural glow while reducing glare.
- Precise Light Control - tilt vanes for full command of privacy and brightness.
- Wide Design Choices - broad palette of colours and textures to complement interiors.
- Manual or Motorized Options - from simple wand control to luxury automation.
- Cordless & Family-Safe - safe, modern, and worry-free for homes with children and pets.
- Seamless Operation - engineered for smooth, quiet, and reliable performance.
- Value Advantage - this innovative shade is offered at the most accessible and aggressive price point.



# Dream Shade

(operated by manual or motorization)

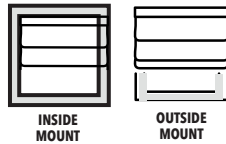
New  
Maxxmar  
Quality  
Product



# Measuring Guide

## Measuring Tips

- Decide on which Mount Type you want: Inside Mount or Outside Mount.
- Use a standard Metal Tape Measure.
- Round Down to the Nearest 1/8" for Width.
- Write Down Your Measurements.



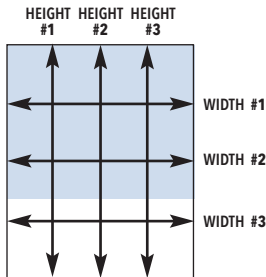
## Inside Mount

### Width

- Measure the inside edge of the window in 3 places (top, middle and bottom) taking the exact width left to right.
- Of the three measurements, take the **smallest size** and write that measurement on your order.

### Height

- Measure the inside edge of the window in 3 places (left, middle and right) taking the exact height top to bottom.
- **For Blinds & Shades:** of the three measurements, take the **largest size** and write that measurement on your order.
- **For Shutters and BetterFIT™ Shades:** take the **smallest size** on the height.



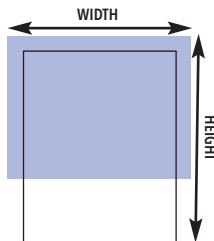
**NOTES**

- Maxxmar™ will make necessary deductions to fit the window opening.

## Outside Mount

### Width

- Measure the outer edge of the left hand window moulding to the outer edge of the right hand window moulding.
- Add extra inches for coverage on each side of the window to minimize light gaps and for additional privacy.



**NOTES**

- Determine whether you want to install the shade on **top** of the window moulding or **directly onto** the window moulding.
- In either case, ensure that you have approximately 2 1/2" of clearance and that you have a **flat surface** on to which to install the product.

### Height

- Measure the top edge of the window moulding to the bottom edge of the window moulding.
- To accommodate for hardware height, add extra inches to the overall shade height ensuring proper coverage for the installation.

# Product & Child Safety

## Child-Safe Lift Systems

- Safeguard Plus (Tensioner or Magnetic)
- DecoraSafe™ - Concealed Chain System
- Genius - Pump Action System (Patent Pending)
- Maxx-Lift (Cordless)
- Motorization

All products come with an official warning label:

**⚠ WARNING STRANGULATION HAZARD**  
 YOUNG CHILDREN CAN BE STRANGLED BY CORDS. IMMEDIATELY REMOVE THIS PRODUCT IF A CORD LONGER THAN 22 CM OR A LOOP EXCEEDING 44 CM AROUND BECOMES ACCESSIBLE.

**⚠ MISE EN GARDE RISQUE D'ÉTRANGLEMENT**  
 LES ENFANTS EN BAS ÂGE PEUVENT S'ÉTRANGLER AVEC DES CORDES. ENLEVEZ IMMÉDIATEMENT CE PRODUIT SI UNE CORDE MESURANT PLUS DE 22 CM DEVIENT ACCESSIBLE OU SI LE CONTOUR D'UNE BOUCLE DE PLUS DE 44 CM DEVIENT ACCESSIBLE.

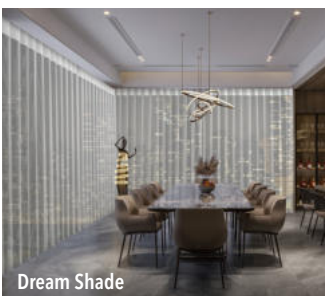


Made In Canada with some high quality imported parts.

## INNOVATIVE PRODUCTS



Outdoor/Exterior - Roller Shades - MaxxZip System

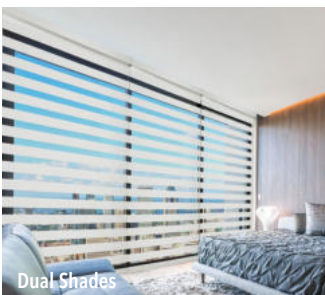


Dream Shade

## SHADES & BLINDS



Perfect (Opera) Sunset Shade



Dual Shades

## SHUTTERS



Talento™ Vinyl Shutters



Tilia™ Wood Shutter

## SPECIALTY SHAPES & SKYLIGHTS



Roller Specialty Shape Shades



Cellular Shades - Framed Skylight & Room Darkening System



[www.maxxmar.com](http://www.maxxmar.com)